

Enhancing your API Portfolio to Support Agentic AI with the ignite Platform

To stay ahead in the AI race, enterprises must rethink how APIs are documented and exposed - not just for developers, but for AI agents as well.

Agentic AI systems require structured, enriched, and context-aware API documentation that is fundamentally different from what developers need. Yet most enterprises today have thousands of APIs across repos, gateways, and integration platforms, many lacking even basic developer-level documentation.

The ignite Platform accelerates your journey to AI-ready APIs, providing a fast, secure, and cost-effective path, without compromising API governance or security.



Agent Consumer example

```
{
  "openapi": "3.1.0",
  "info": {
    "title": "Sentiment Analyzer API",
    "version": "1.0.0",
    "description": "An API that analyzes sentiment in text input
and returns a structured response, including hypermedia
controls for next actions.",
    "x-ai-summary": "Analyze text and receive actionable links for
next steps.",
    "contact": {
      "name": "Example Corp",
      "url": "https://example.com",
      "email": "support@example.com"
    }
  }
}
```



Developer Consumer example

```
{
  "openapi": "3.1.0",
  "info": {
    "title": "Sentiment Analyzer API",
    "version": "1.0.0",
    "description": "# Sentiment Analyzer API\n\n**Digitalml API Overview**\n\nThe Digitalml API empowers developers and businesses
to seamlessly integrate advanced digital solutions into their
applications, streamlining processes and enhancing user experiences.
At its core, the API provides robust functionalities that facilitate data
exchange, automate workflows, and enable real-time analytics, all
while maintaining a secure and reliable environment.\n\n**Core Functionality:**\n\n- **Data Integration:** Effortlessly connect and
synchronize data across multiple platforms, ensuring that your
applications have access to up-to-date information at all times.\n-
```

Why You Need Two Distinct Views: AI Consumer vs. Developer Consumer

Getting to a reusable, AI-ready state isn't simple, especially with sprawling API ecosystems. Here's why ignite's dual-view approach matters:

- You likely have thousands of APIs spread across repos, gateways, and integration platforms—many not even documented well enough for developers.
- Agentic AI consumers require different inputs: structured context, enriched metadata, and consistent, machine-readable formats.
- Developers need human-readable docs with usage examples, clear descriptions, and domain context.
- Even code samples may differ between the two audiences—what's useful for a developer isn't necessarily usable by an AI agent.
- ignite creates both views (for AI agent and for human consumers) securely and efficiently, with centralized governance and no compromise on API security.
- Lifecycle and reuse tracking is automated, ensuring both versions stay aligned as APIs evolve

How ignite Helps: A Step-by-Step Guide

1 Centralize your APIs

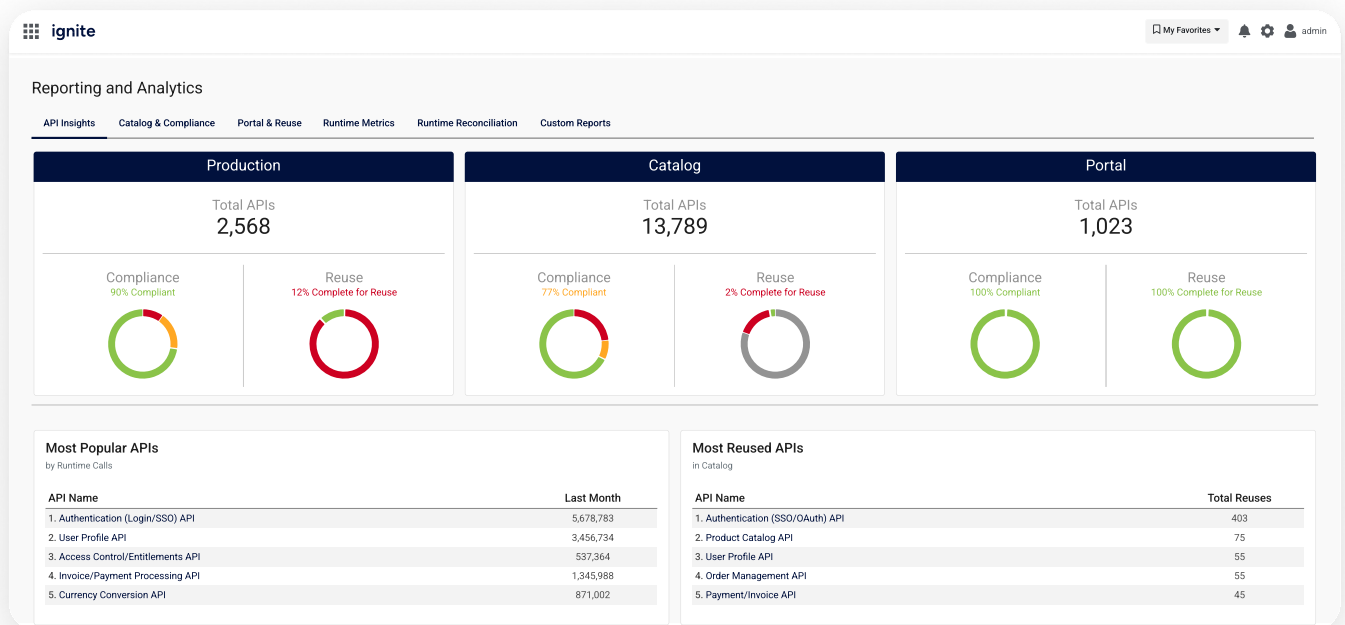
Ingest and organize all APIs across your environments into a unified, always-active catalog using ignite's native connectors to repos and API gateways.

2 Identify what to enhance

Use built-in insights to score APIs against compliance and reusability standards and prioritize which need enhancement for AI or developer consumption.

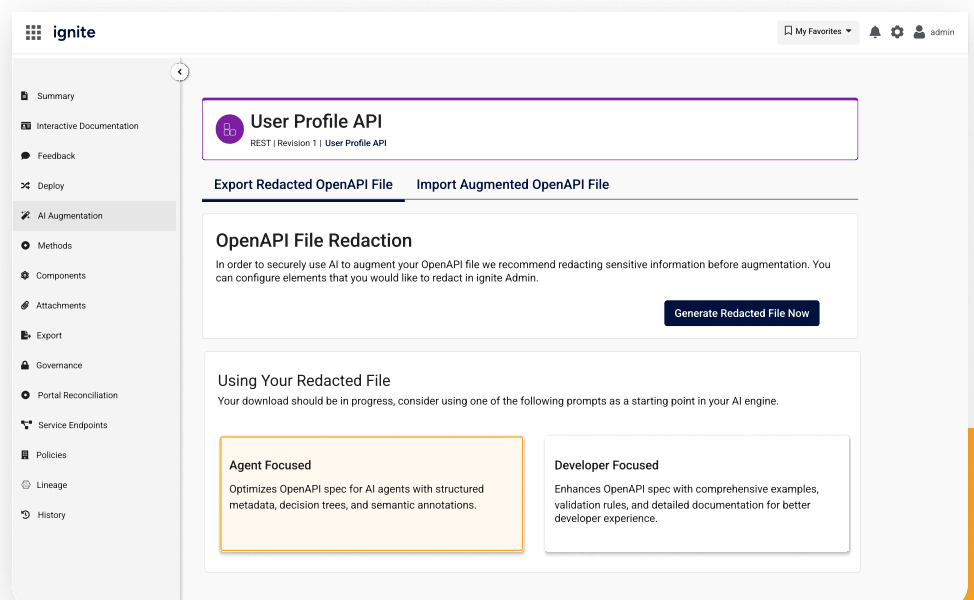
3 Empower a centralized AI documentation team

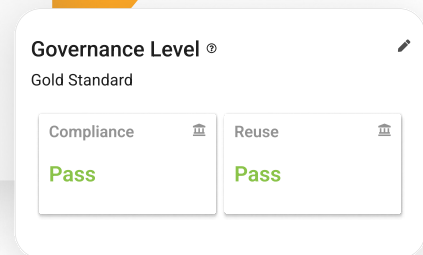
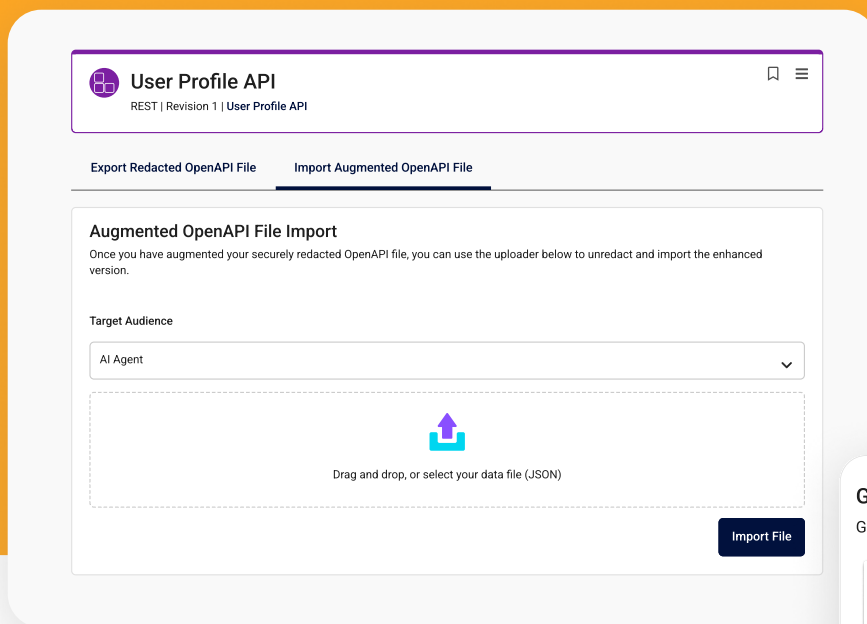
Assign a small group of trusted users to drive documentation enhancement for AI Consumers and Developer Consumers via ignite's Secure AI Augmentation. This eliminates the inefficiencies of pushing the task to every developer team and mitigates the risk of sensitive data exposure or runaway AI costs.



4 Redact and enhance securely

Use ignite to redact sensitive fields and apply tailored prompts to safely generate both AI and developer-focused documentation.





5 Review and Refine

Designated reviewers polish both the AI Consumer (AC) and Developer Consumer (DC) views to meet enterprise and audience-specific standards.

6 Maintain a Single Source of Truth

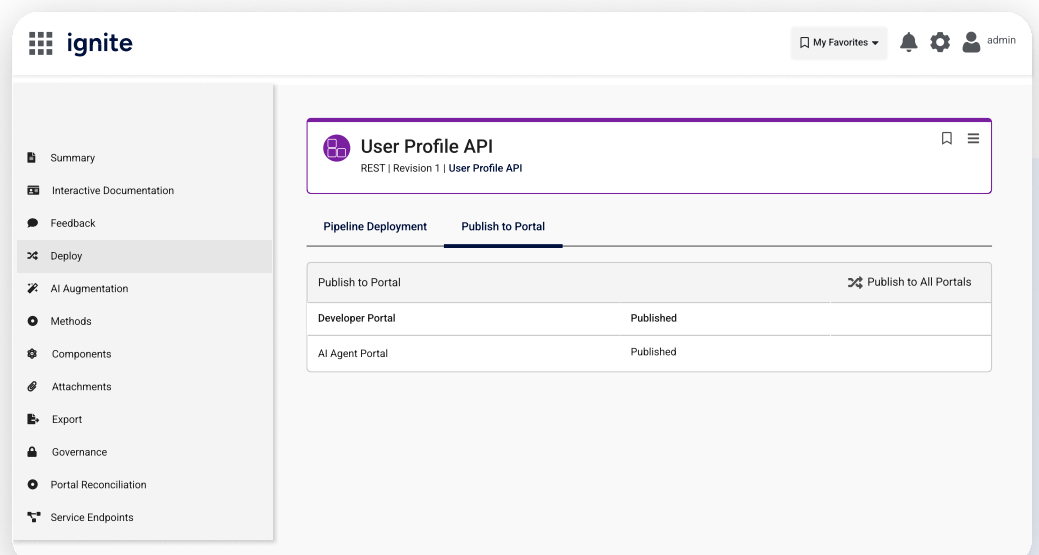
Once gold-standard APIs are enhanced, they are seamlessly re-imported into your secure catalog, creating dual views of the same API, simplifying lifecycle management without duplicating APIs. Upon re-import, ignite automatically recalculates compliance and reusability scores to ensure each enhanced API aligns with your enterprise standards.

7 Publish where it matters

Push the AC and DC views to your consumer portals. AI teams can request enhanced AC views and Agentic-ready APIs can be routed into dedicated AI runtime environments.

8 Govern and track reuse

ignite tracks consumption and reuse. It also ensures if developers update the API that the new documentation is also kept up to date to maintain accuracy across both views.

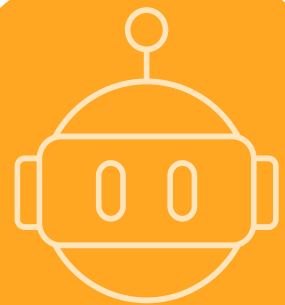


Conclusion: Prepare Your APIs for the Future of AI

As AI agents become more integral to enterprise workflows, having AI-ready APIs isn't a nice-to-have, it's a strategic imperative. ignite enables you to modernize your API portfolio with precision and speed, delivering tailored documentation for both human and machine consumers. With centralized governance, secure AI augmentation, and full lifecycle management, Ignite helps you unlock greater reuse, reduce risks, and position your organization for success in the age of Agentic AI.

Learn more about how
ignite can support your AI
initiatives.

[Book a demo](#) with our
experts today.



About digitalML

ignite by digitalML is the foundation of your enterprise API strategy — empowering core API teams to eliminate sprawl at the source and unlock the full value of your API investments. With Ignite, enterprises can improve application flexibility, reduce inefficiencies across the API lifecycle, and proactively manage risks related to security, compliance, and downtime. At its core, Ignite provides a vendor-neutral API Catalog that unifies all your APIs — continuously updated through integrations with your repositories and gateways. Purpose-built for complex enterprise environments, Ignite enables full lifecycle management across every stage, system, and stakeholder — ensuring consistent governance, seamless reuse, and long-term scalability.

Ignite's API Consumer Portal enhances discovery and adoption, helping teams across the enterprise — and beyond — find and reuse the right APIs faster. The result: better-aligned digital initiatives, fewer redundant builds, and APIs that are trusted, strategic assets.

One platform. One source of truth. The most complete API catalog, lifecycle management solution, and consumer portal — all in one.